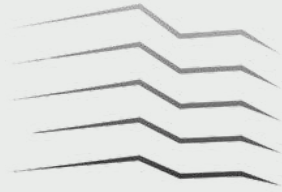




platinum
TOWER



Welcome

Tucked in the vibrant heart of **Cape Point** offers a lifestyle defined by its contemporary elegance and serene location. Here, every day begins with picturesque views of Atlantic Ocean, and every moment is an opportunity for peace and rejuvenation. In this charming location of a city designed for the future, Platinum Tower is not just a place to live—it is a place to love.



Apartment Type
Studios,
2 & 3 Bedrooms



Apartment Size
62 - 201 m²

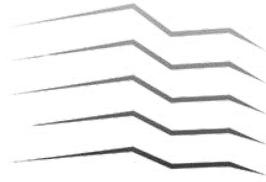


Commercial Space
550m²



Payment Plan
36 Months





Mastering the art of living by the Ocean

Luxury intertwines seamlessly with the serenity of waterfront living, offering a sanctuary where opulence meets tranquility. Embrace the gentle lull of waves and breathtaking views, enveloped in an ambiance of refined indulgence. Here, every moment is a symphony of luxury, echoing the serene rhythm of waterfront life



11 storey
Tower



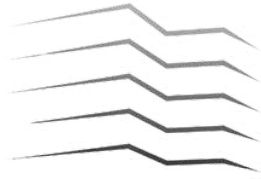
Prime
Location



Panoramic
Ocean Views



**FULLY
FURNISHED
APARTMENTS**



Live Elevated Live Platinum

Gambia's hidden gem **Cape Point**, is a prestigious neighborhood housing the city's affluent residents. **Platinum Tower's** location offers easy access to top attractions, business hubs, and entertainment options. Live life to the fullest, immerse yourself in the vibrant culture, savor the local and continental cuisine, and explore the serenity of water front living.




platinum
TOWER



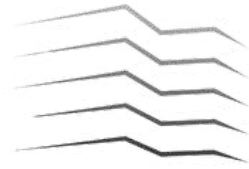
Commercial Spaces

From chic fashion houses to artisanal home decor, our retail spaces cater to the most discerning tastes. Stroll through upscale stores, each with distinctive charm. Our retail spaces combine the allure of renowned brands with a social atmosphere, creating a lifestyle hub for residents. From exclusive cafes to curated storefronts, experience the extraordinary without leaving home.









The Guide to Elevate Your Everyday Living

Our commitment to excellence shines through every detail, ensuring a living experience that is nothing short of extraordinary. Join us in a world where every day feels like a celebration of the finer things in life.



Reception



Underground
Parking



Back Up
Generator



Property Management
Services



Elevators



Gymnasium



24 x 7 Security



CCTV Surveillance





platinum





Location

A prime location with
unmatched convenience

Strategically located in **CAPE POINT** to ensure easy access to the city's prominent landmarks and a walking distance from the ocean.

Whether it's retail therapy, an early flight, a business meeting, a night out in town, or a leisurely stroll, everything you desire is within reach.



platinum TOWER



Sunbeach Hotel & Resort

Cape Point

Cape Point Beach

British High Commissioner Residence

United Nations Development Program

EU Ambassador Residence

Ocean Bay Hotel & Spa

Calypso Bar & Restaurant

National Botanical Gardens

Bakau Craft Market

Right Choice Supermarket

Bojang River Lodge

African Village

Mega Bank

Tropic Garden

House of Flavour

Trust Bank

Bakau Police Station

Bakau

International BM

SEA

SEA

Atlantic Blvd

Old Cape Road

British Embassy Banjul

St Paul's Church

Majula Boutique

Banjul American International School

Kachikally Crocodile Pool

Cape Creek

Bakau New Town

GT Bank

Western Union Bank

MRC Unit The Gambia at LSHTM

Leybato Beach

Atlantic Blvd

Marina International School

The Shack Fajara

Envy Night Club

Garba Jahumpa Road

Ndemban Health Center

The Gambia Standards Bureau

Independence Stadium

Fajara Club

Kairaba Ave

Standard Chartered Bank

Baha'i National Center

Social Security

GNOC

Traffic Light Junctions

National Audit (NAO)





Residential Apartments

A seasoned investor's dream

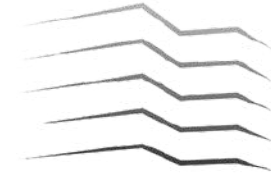
Capitalize on the thriving mid and long-term rental market for impressive returns on your investment.

Studios
18 units

2 Bed
18 units

3 Bed
18 units

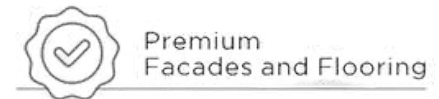
Penthouse
2 units



Views from Terraces

Discover elegance and tranquility by the ocean

The 11 Storey tower stands poised with unparalleled views of clear waters and captivating illuminations of the city.





APARTMENT TYPE 1C



APARTMENT TYPE 1B



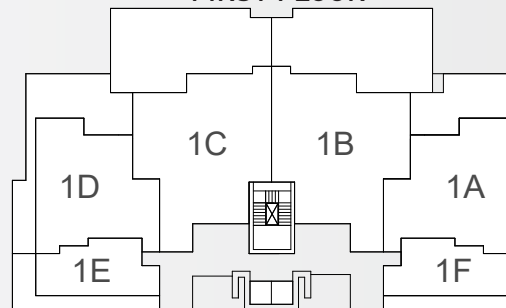
APARTMENT TYPE 1D



FIRST FLOOR



APARTMENT TYPE 1A





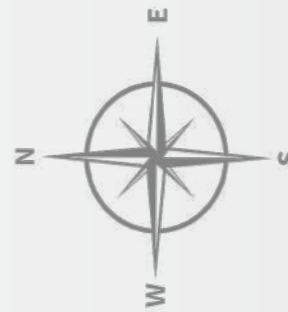
APARTMENT TYPE 2C



APARTMENT TYPE 2B



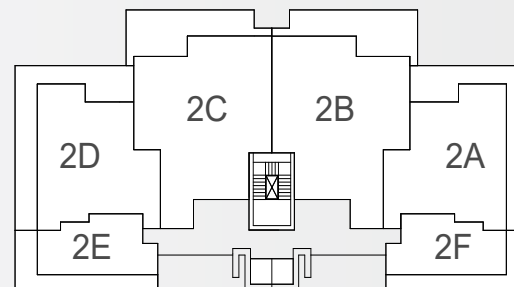
APARTMENT TYPE 2D



SECOND FLOOR



APARTMENT TYPE 2A





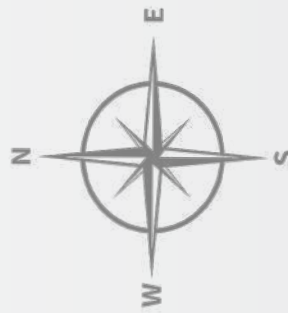
APARTMENT TYPE 3C



APARTMENT TYPE 3B



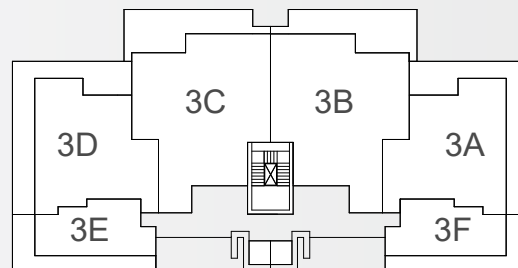
APARTMENT TYPE 3D



THIRD FLOOR



APARTMENT TYPE 3A





APARTMENT TYPE 4C



APARTMENT TYPE 4B



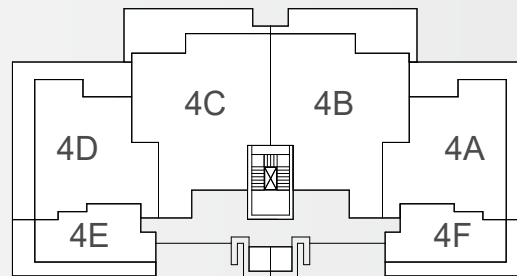
APARTMENT TYPE 4D



FOURTH FLOOR



APARTMENT TYPE 4A





APARTMENT TYPE 5C



APARTMENT TYPE 5B



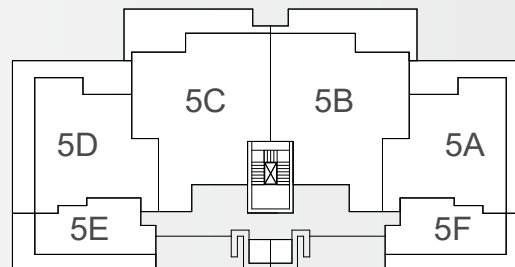
APARTMENT TYPE 5D



FIFTH FLOOR



APARTMENT TYPE 5A





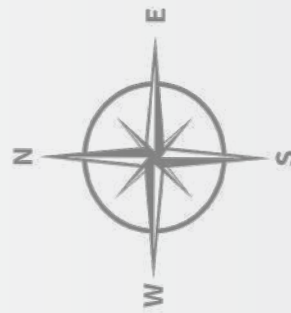
APARTMENT TYPE 6C



APARTMENT TYPE 6B



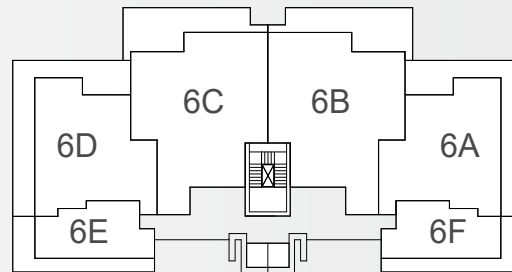
APARTMENT TYPE 6D



SIXTH FLOOR



APARTMENT TYPE 6A





APARTMENT TYPE 7C



APARTMENT TYPE 7B



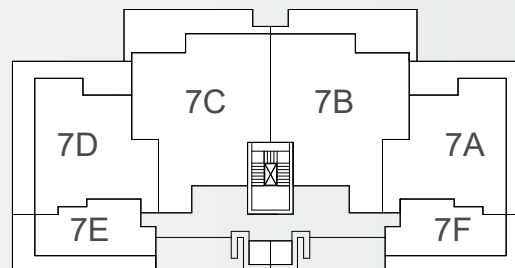
APARTMENT TYPE 7D



SEVENTH FLOOR



APARTMENT TYPE 7A





APARTMENT TYPE 8C



APARTMENT TYPE 8B



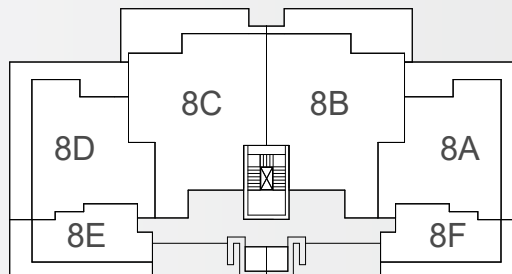
APARTMENT TYPE 8D



EIGHTH FLOOR



APARTMENT TYPE 8A





APARTMENT TYPE 9C



APARTMENT TYPE 9B



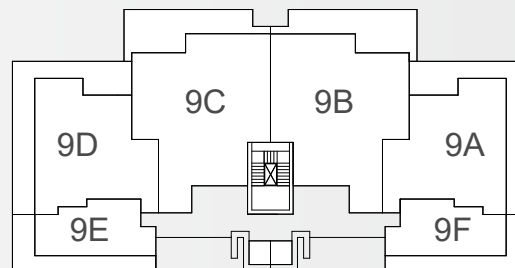
APARTMENT TYPE 9D



NINTH FLOOR



APARTMENT TYPE 9A





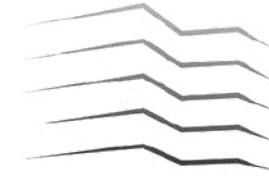
APARTMENT TYPE 10B



APARTMENT TYPE 10A







Floor Plans

Thoughtfully Designed for Comfort

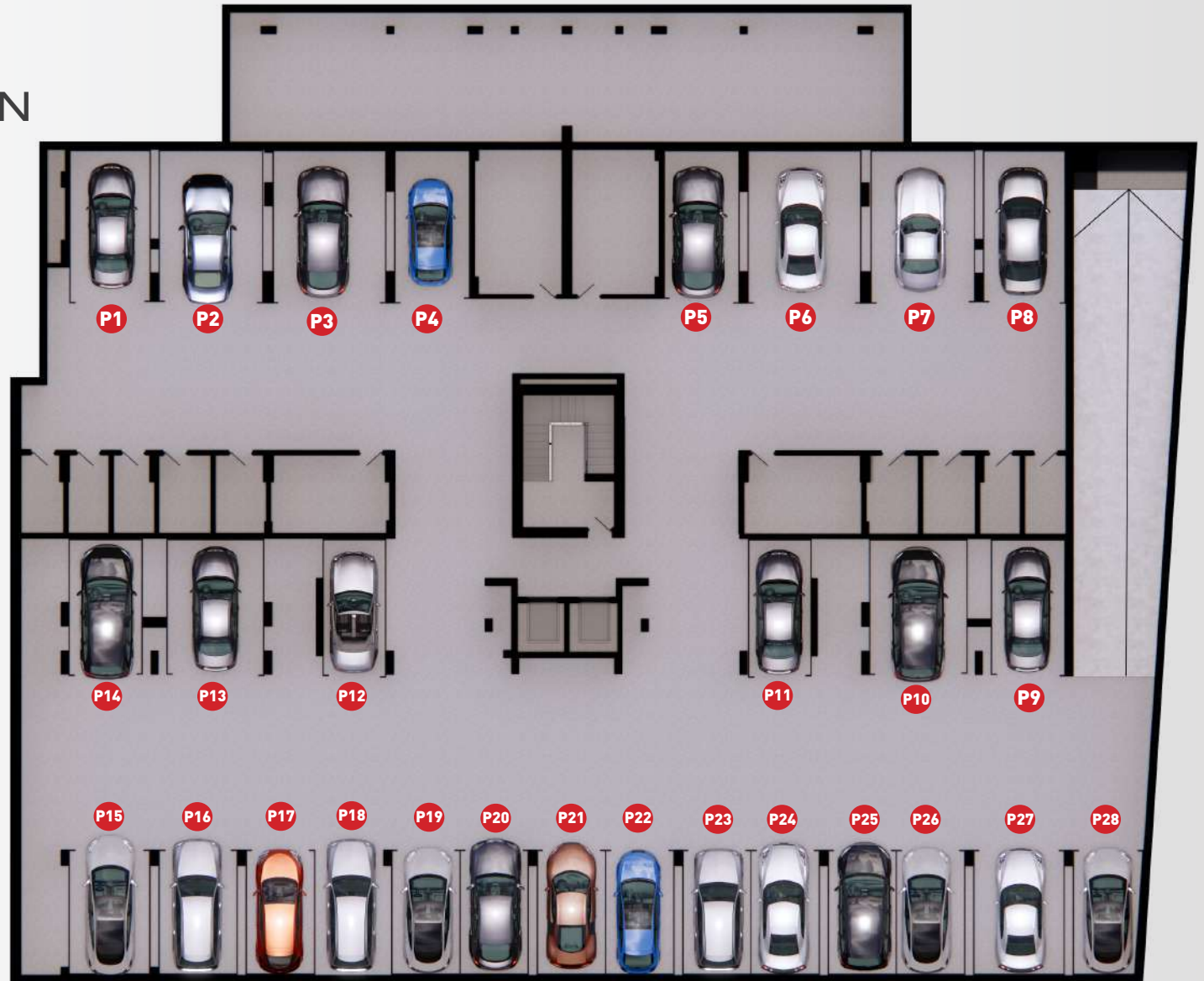
Explore the living spaces that
can transform your everyday
life into a masterpiece of
comfort and style.





BASEMENT FLOOR PLAN

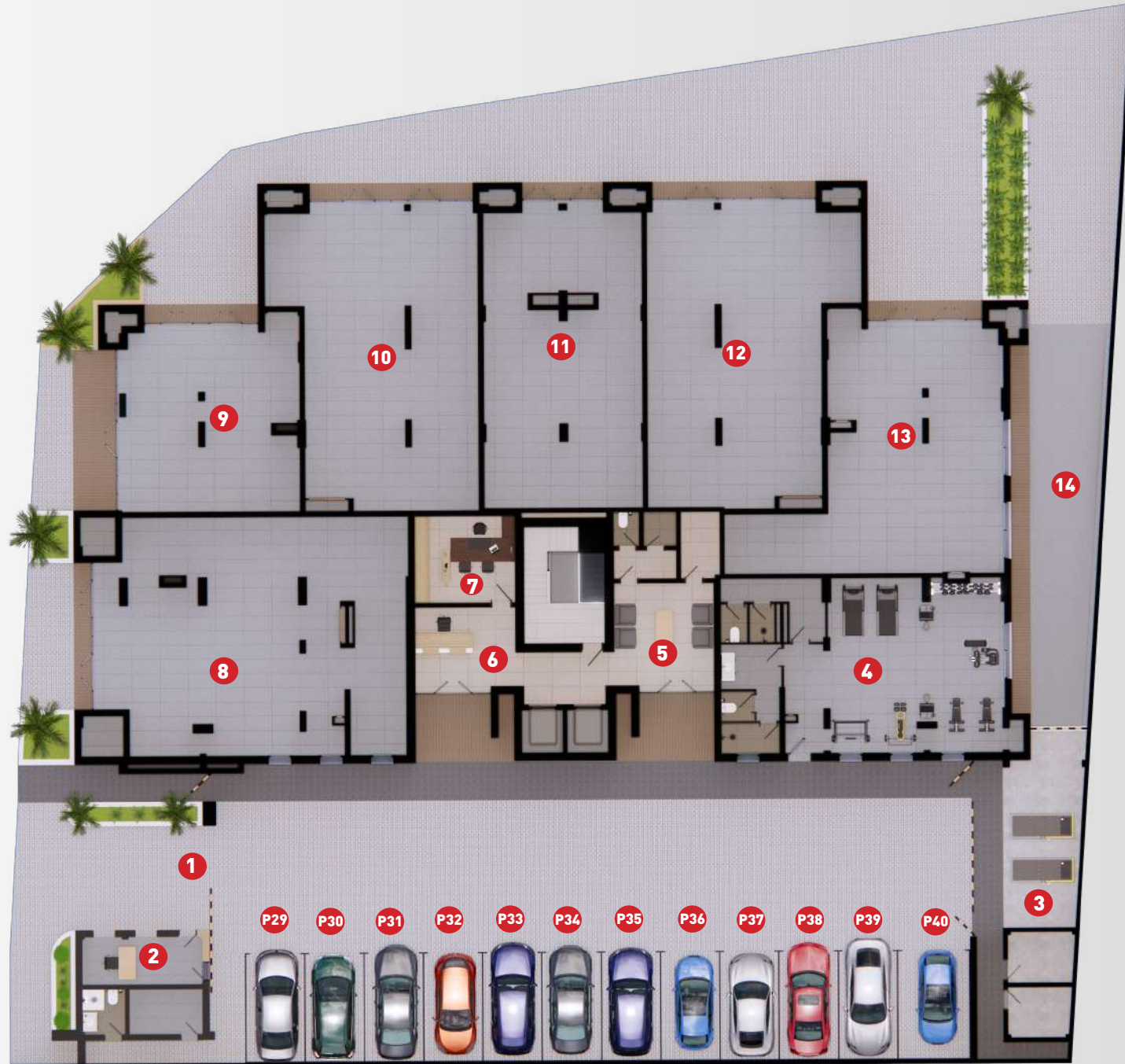
1. P1 TO P28 PARKING LOTS





GROUND FLOOR PLAN

- 1. MAIN ENTRANCE GATE
- 2. SECURITY CABIN
- 3. GENERATOR AND ELECTRICAL AREA
- 4. GYMNASIUM
- 5. WAITING AREA
- 6. RECEPTION
- 7. OFFICE
- 8. COMMERCIAL SPACE-1
- 9. COMMERCIAL SPACE-2
- 10. COMMERCIAL SPACE-3
- 11. COMMERCIAL SPACE-4
- 12. COMMERCIAL SPACE-5
- 13. COMMERCIAL SPACE-6
- 14. BASEMENT RAMP ACCESS





1ST FLOOR PLAN



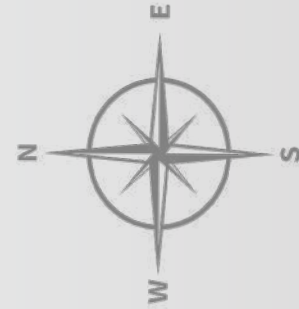


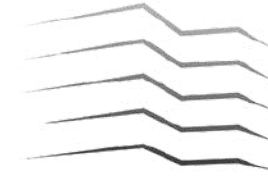
2nd to 9th FLOOR PLAN





10TH FLOOR PLAN





Unit Plans & Interiors







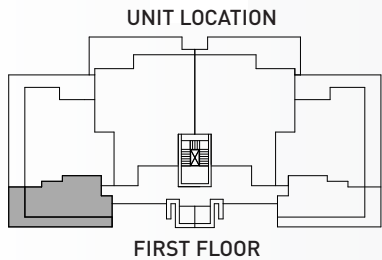
STUDIO-APARTMENT NO-1E

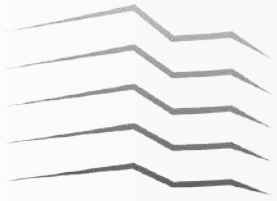
AREA DESCRIPTION

| | |
|--------------|----------------------|
| BUILT AREA | 40.54 M ² |
| TERRACE AREA | 21.85 M ² |
| TOTAL AREA | 62.39 M ² |

USEFUL AREAS

| | |
|------------------------------|----------------------|
| 1 LIVING / DINNING / KITCHEN | 16.3 M ² |
| 2 BATHROOM | 4.1 M ² |
| 3 MASTER BEDROOM | 12.3 M ² |
| 4 TERRACE | 21.85 M ² |





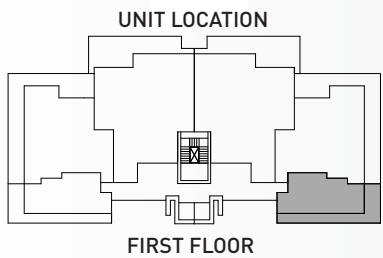
STUDIO-APARTMENT NO-1F

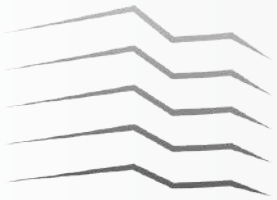
AREA DESCRIPTION

| | |
|--------------|----------------------|
| BUILT AREA | 40.54 M ² |
| TERRACE AREA | 17.25 M ² |
| TOTAL AREA | 57.79 M ² |

USEFUL AREAS

| | |
|------------------------------|----------------------|
| 1 LIVING / DINNING / KITCHEN | 16.3 M ² |
| 2 BATHROOM | 4.1 M ² |
| 3 MASTER BEDROOM | 12.3 M ² |
| 4 TERRACE | 17.25 M ² |





2 BED -APARTMENT NO-1A

AREA DESCRIPTION

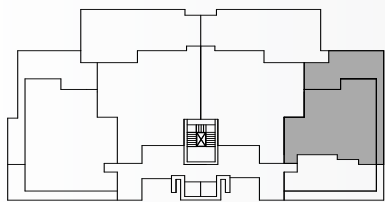
| | |
|--------------|-----------------------|
| BUILT AREA | 84.08M ² |
| TERRACE AREA | 43.73M ² |
| TOTAL AREA | 127.81 M ² |

USEFUL AREAS

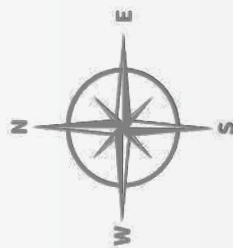
| | |
|--------------------|----------------------|
| 1 LIVING & DINNING | 23.3 M ² |
| 2 KITCHEN | 7.1 M ² |
| 3 BATHROOM | 4.3 M ² |
| 4 BEDROOM-01 | 9.2 M ² |
| 5 BATHROOM | 5.4M ² |
| 6 MASTER BEDROOM | 14.9 M ² |
| 7 TERRACE | 43.73 M ² |



UNIT LOCATION



FIRST FLOOR





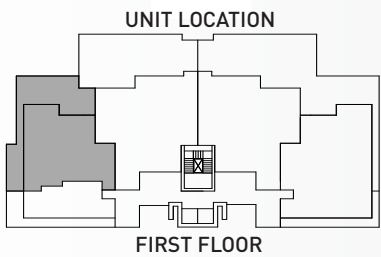
2 BED -APARTMENT NO-10

AREA DESCRIPTION

| | |
|--------------|-----------------------|
| BUILT AREA | 84.08 M ² |
| TERRACE AREA | 49.56 M ² |
| TOTAL AREA | 133.64 M ² |

USEFUL AREAS

| | |
|--------------------|----------------------|
| 1 LIVING & DINNING | 23.3 M ² |
| 2 KITCHEN | 7.1 M ² |
| 3 BATHROOM | 4.3 M ² |
| 4 BEDROOM-01 | 9.2 M ² |
| 5 BATHROOM | 5.4M ² |
| 6 MASTER BEDROOM | 14.9 M ² |
| 7 TERRACE | 49.56 M ² |





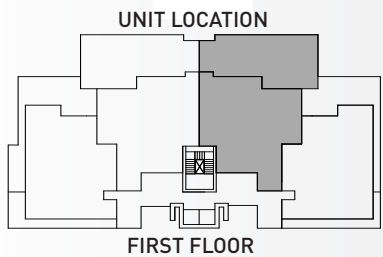
3 BED - APARTMENT NO-1B

AREA DESCRIPTION

| | |
|--------------|----------------------|
| BUILT AREA | 127.4 M ² |
| TERRACE AREA | 74.4 M ² |
| TOTAL AREA | 201.8 M ² |

USEFUL AREAS

| | |
|------------------|---------------------|
| 1 LIVING ROOM | 18.1 M ² |
| 2 DINNING AREA | 10.9 M ² |
| 3 KITCHEN | 9.9 M ² |
| 4 PANTRY | 4.0 M ² |
| 5 BEDROOM - 02 | 10.4 M ² |
| 6 BATHROOM | 5.1 M ² |
| 7 BATHROOM | 4.9 M ² |
| 8 MASTER BEDROOM | 18.1 M ² |
| 9 BEDROOM - 01 | 11.4 M ² |
| 10 BATHROOM | 2.9 M ² |
| 11 TERRACE | 74.4 M ² |





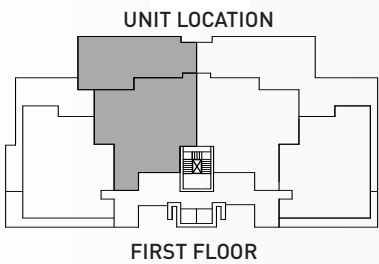
3 BED -APARTMENT NO-1C

AREA DESCRIPTION

| | |
|--------------|----------------------|
| BUILT AREA | |
| TERRACE AREA | 127.4 M ² |
| TOTAL AREA | 74.4 M ² |
| | 201.8 M ² |

USEFUL AREAS

| | |
|------------------|---------------------|
| 1 LIVING ROOM | 18.1 M ² |
| 2 DINNING AREA | 10.9M ² |
| 3 KITCHEN | 9.9 M ² |
| 4 PANTRY | 4.0 M ² |
| 5 BEDROOM - 02 | 10.4 M ² |
| 6 BATHROOM | 5.1 M ² |
| 7 BATHROOM | 4.9 M ² |
| 8 MASTER BEDROOM | 18.1 M ² |
| 9 BEDROOM - 01 | 11.4 M ² |
| 10 BATHROOM | 2.9 M ² |
| 11 TERRACE | 74.4 M ² |









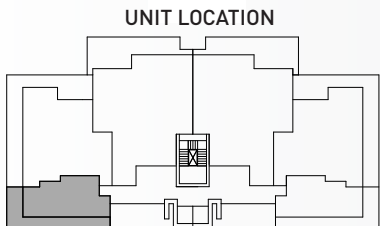
STUDIO-APARTMENT NO-2E TO 9E

AREA DESCRIPTION

| | |
|--------------|----------------------|
| BUILT AREA | 40.54 M ² |
| TERRACE AREA | 21.28 M ² |
| TOTAL AREA | 61.82 M ² |

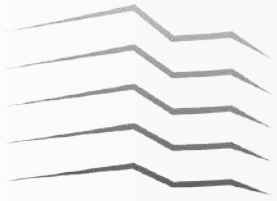
USEFUL AREAS

| | |
|------------------------------|----------------------|
| 1 LIVING / DINNING / KITCHEN | 16.3 M ² |
| 2 BATHROOM | 4.1 M ² |
| 3 MASTER BEDROOM | 12.3 M ² |
| 4 TERRACE | 21.28 M ² |



SECOND TO NINTH FLOOR





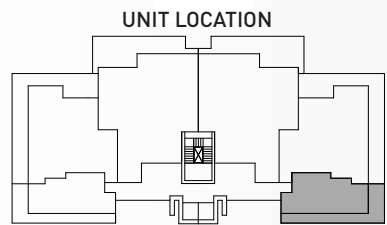
STUDIO-APARTMENT NO-2F TO 9F

AREA DESCRIPTION

| | |
|--------------|----------------------|
| BUILT AREA | 40.54 M ² |
| TERRACE AREA | 21.28 M ² |
| TOTAL AREA | 61.82 M ² |

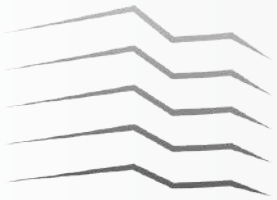
USEFUL AREAS

| | |
|------------------------------|----------------------|
| 1 LIVING / DINNING / KITCHEN | 16.3 M ² |
| 2 BATHROOM | 4.1 M ² |
| 3 MASTER BEDROOM | 12.3 M ² |
| 4 TERRACE | 21.28 M ² |



SECOND TO NINTH FLOOR





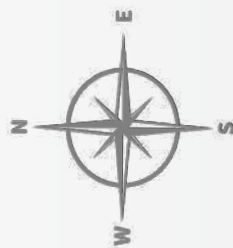
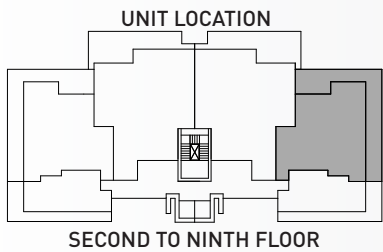
2BED APARTMENT TYPE-2A TO 9A

AREA DESCRIPTION

| | |
|--------------|-----------------------|
| BUILT AREA | 84.08M ² |
| TERRACE AREA | 38.96M ² |
| TOTAL AREA | 123.04 M ² |

USEFUL AREAS

| | |
|--------------------|----------------------|
| 1 LIVING & DINNING | 23.3 M ² |
| 2 KITCHEN | 7.1 M ² |
| 3 BATHROOM | 4.3 M ² |
| 4 BEDROOM-01 | 9.2 M ² |
| 5 BATHROOM | 5.4M ² |
| 6 MASTER BEDROOM | 14.9 M ² |
| 7 TERRACE | 38.96 M ² |





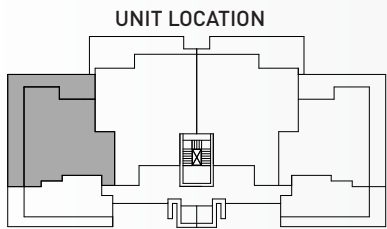
2BED APARTMENT TYPE-2D TO 9D

AREA DESCRIPTION

| | |
|--------------|-----------------------|
| BUILT AREA | 84.08M ² |
| TERRACE AREA | 38.96M ² |
| TOTAL AREA | 123.04 M ² |

USEFUL AREAS

| | |
|--------------------|----------------------|
| 1 LIVING & DINNING | 23.3 M ² |
| 2 KITCHEN | 7.1 M ² |
| 3 BATHROOM | 4.3 M ² |
| 4 BEDROOM-01 | 9.2 M ² |
| 5 BATHROOM | 5.4M ² |
| 6 MASTER BEDROOM | 14.9 M ² |
| 7 TERRACE | 38.96 M ² |



SECOND TO NINTH FLOOR





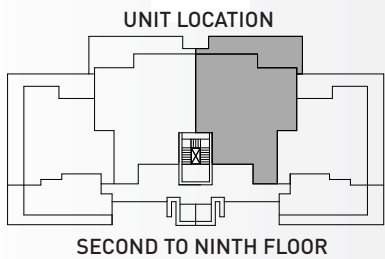
3BED APARTMENT TYPE-2B TO 9B

AREA DESCRIPTION

| | |
|--------------|----------------------|
| BUILT AREA | 127.4 M ² |
| TERRACE AREA | 29 M ² |
| TOTAL AREA | 156.4 M ² |

USEFUL AREAS

| | |
|------------------|---------------------|
| 1 LIVING ROOM | 18.1 M ² |
| 2 DINNING AREA | 10.9 M ² |
| 3 KITCHEN | 9.9 M ² |
| 4 PANTRY | 4.0 M ² |
| 5 BEDROOM - 02 | 10.4 M ² |
| 6 BATHROOM | 5.1 M ² |
| 7 BATHROOM | 4.9 M ² |
| 8 MASTER BEDROOM | 18.1 M ² |
| 9 BEDROOM - 01 | 11.4 M ² |
| 10 BATHROOM | 2.9 M ² |
| 11 TERRACE | 29 M ² |





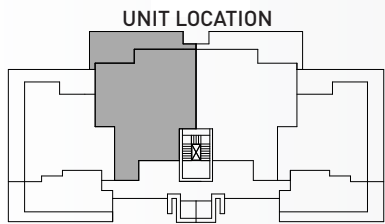
3BED APARTMENT TYPE-2C TO 9C

AREA DESCRIPTION

| | |
|--------------|----------------------|
| BUILT AREA | 127.4 M ² |
| TERRACE AREA | 29 M ² |
| TOTAL AREA | 156.4 M ² |

USEFUL AREAS

| | |
|-------------------|---------------------|
| 1 LIVING ROOM | 18.1 M ² |
| 2 DINNING AREA | 10.9 M ² |
| 3 KITCHEN | 9.9 M ² |
| 4 PANTRY | 4.0 M ² |
| 5 BEDROOM - 02 | 10.4 M ² |
| 6 BEDROOM - 01 | 5.1 M ² |
| 7 BATHROOM | 4.9 M ² |
| 8 BATHROOM | 18.1 M ² |
| 9 BATHROOM | 11.4 M ² |
| 10 MASTER BEDROOM | 2.9 M ² |
| 11 TERRACE | 29 M ² |



SECOND TO NINTH FLOOR









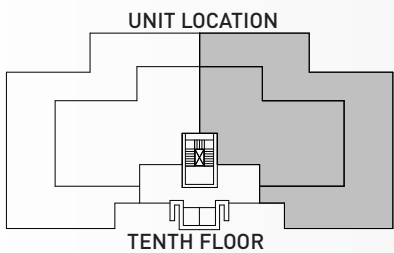
PENTHOUSE TYPE-10A

AREA DESCRIPTION

| | |
|--------------|----------------------|
| BUILT AREA | 154 M ² |
| TERRACE AREA | 192.6 M ² |
| TOTAL AREA | 346.6 M ² |

USEFUL AREAS

| | |
|------------------|----------------------|
| 1 LIVING ROOM | 24.9 M ² |
| 2 DINNING AREA | 17.9 M ² |
| 3 KITCHEN | 14.5 M ² |
| 4 PANTRY | 6.2 M ² |
| 5 BEDROOM - 02 | 6.9 M ² |
| 6 BATHROOM | 4.5 M ² |
| 7 BEDROOM - 01 | 13.5 M ² |
| 8 MASTER BEDROOM | 20.4 M ² |
| 9 BATHROOM | 5.7 M ² |
| 10 BATHROOM | 3.4 M ² |
| 11 TERRACE | 192.6 M ² |





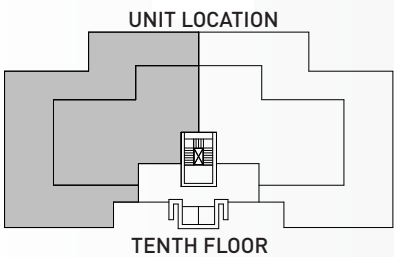
PENTHOUSE TYPE-10B

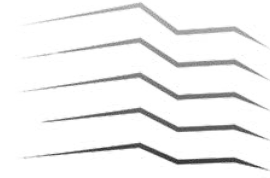
AREA DESCRIPTION

| | |
|--------------|----------------------|
| BUILT AREA | 154 M ² |
| TERRACE AREA | 192.6 M ² |
| TOTAL AREA | 346.6 M ² |

USEFUL AREAS

| | |
|------------------|----------------------|
| 1 LIVING ROOM | 24.9 M ² |
| 2 DINNING AREA | 17.9 M ² |
| 3 KITCHEN | 14.5 M ² |
| 4 PANTRY | 6.2 M ² |
| 5 BEDROOM - 02 | 6.9 M ² |
| 6 BATHROOM | 4.5 M ² |
| 7 BEDROOM - 01 | 13.5 M ² |
| 8 MASTER BEDROOM | 20.4 M ² |
| 9 BATHROOM | 5.7 M ² |
| 10 BATHROOM | 3.4 M ² |
| 11 TERRACE | 192.6 M ² |

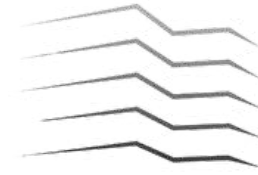




Specifications

Attention to Every Detail

- Fully Furnished Apartments
 - High speed elevators
 - Quality sanitary ware
- Fully Fitted Kitchen with branded appliances
 - Split Air Conditioners
- Premium doors featuring quality brushed ironmongery.
- Low energy LED spots in kitchen, bathrooms, bedroom and living room
 - CCTV & fire protection systems
 - Premium Facade and porcelain flooring
- High-speed Broadband cable with data point
 - Back up water and power systems
- Large Terraces with panoramic ocean views



Why Invest in Platinum Tower?

Wealth Beyond Generations



ROI
10-12% Annum



Price Appreciation
10% per Annum



Annual Rental Yield
10%



A Stunning Marvel brought to you by



+220 414 0200
+220 414 2001



sales@platinumtowergm.com



+44 7584 166607
+44 7958 566915



www.platinumtowergm.com

Project Address : F8MM+G8,Cape Point, Bakau,TheGambia

Office Address : C7HG+X3J, Kerrserign, Senegambia Highway, The Gambia

DISCLAIMER

*The images and designs in this brochure are for illustration purposes only and may not reflect the final product.